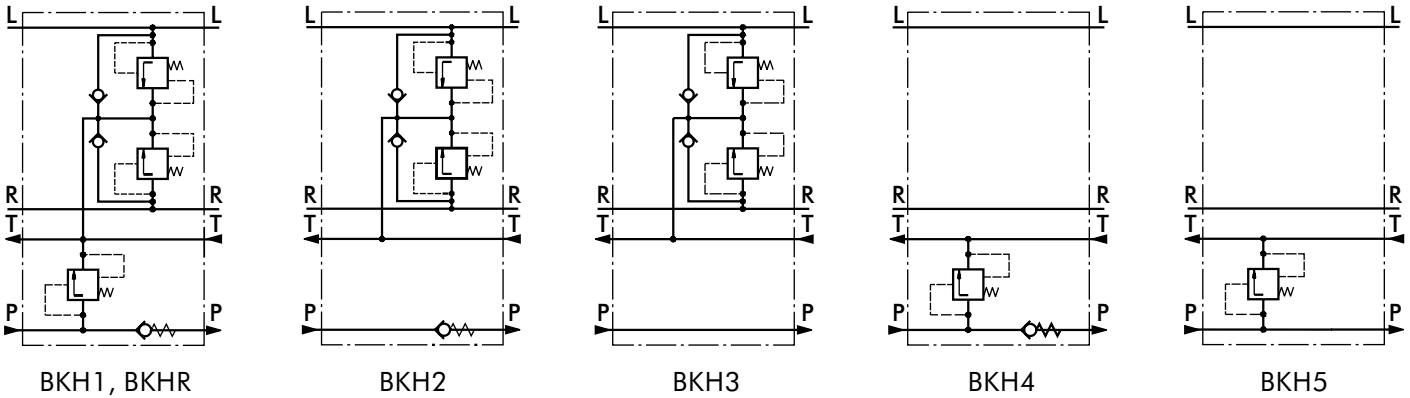


# VALVE BLOCKS FOR HKU AND XY TYPE BKH...



The M+S Hydraulic BKH valves are developed to protect the components of the hydraulic circuit: pumps, steering units and cylinders - from overloads, impacts and cavitation. Some of their advantages are: easy integration into any hydraulic circuit, easy mounting to the steering unit, and quick and easy hose connections. Depending on the design and the built in valves the BKH valves can be divided into 6 types: BKH1 ... BKH5 and BKHR, with BKH5 designed for XY steering units only. The maximum flow rate is in compliance with the whole range of HKU and XY steering units but no more than 80 l/min. The pressure settings for the entry relief valves and the shock valves are given in the table.



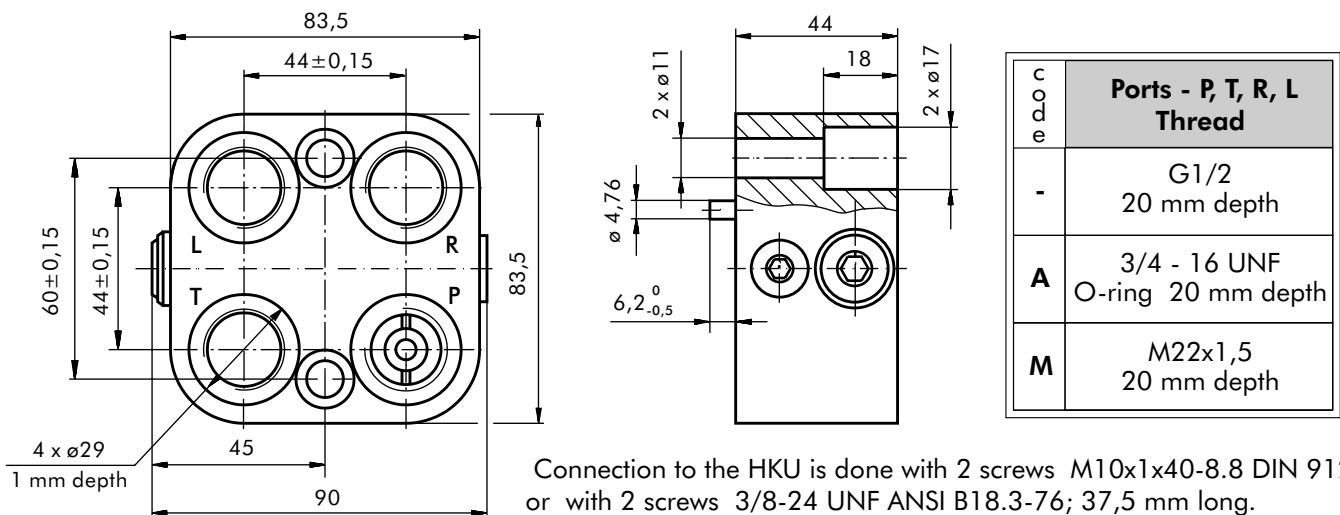
## SPECIFICATION DATA

Parameters	Type									
	BKH1, BKHR				BKH2	BKH3	BKH4, BKH5			
Rated Flow [l/min]	80									
Rated Pressure [bar]	160									
Relief Valve Pressure Settings* [bar]	80	100	125	150	-	-	80	100	125	150
Shock Valves Pressure Settings** [bar]	140	160	180	200	200	240				
Weight, avg. [kg]	1,8 ; 2,3				1,8		1,8			

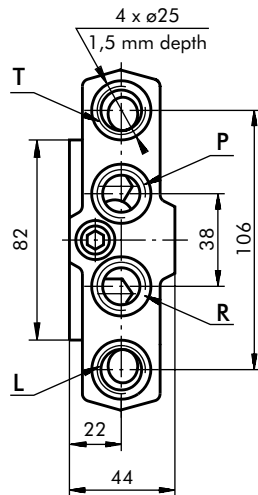
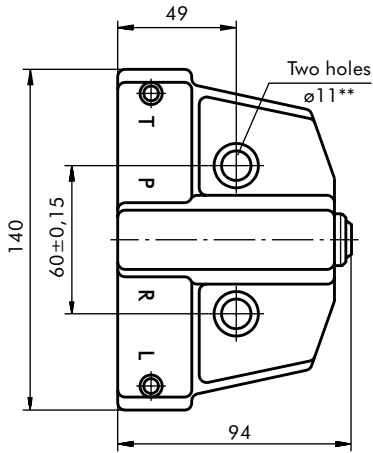
\* Pressure Settings are at flow rate of 30 l/min and viscosity 21 mm<sup>2</sup>/s (50° C).

\*\*Pressure Settings are at flow rate of 2 l/min and viscosity 21 mm<sup>2</sup>/s (50° C).

## DIMENSIONS AND MOUNTING DATA - BKH1, 2, 3, 4



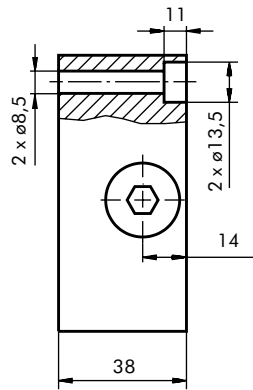
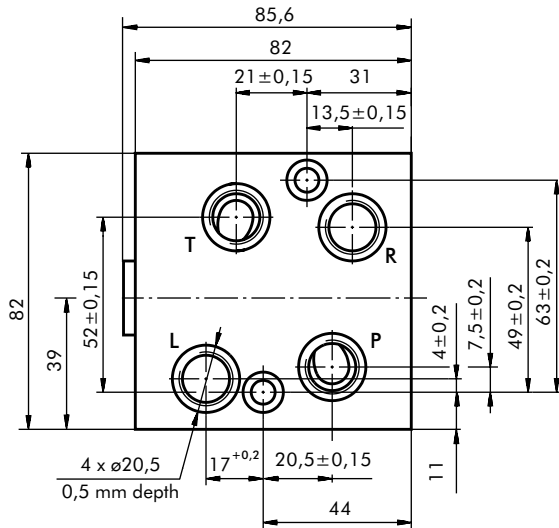
**DIMENSIONS AND MOUNTING DATA - BKHR**



code	Ports - P, T, R, L Thread
<b>A</b>	3/4 - 16 UNF O-ring 22 mm depth
<b>M</b>	M18x1,5 22 mm depth

\*\*Connection to the HKU is done with 2 screws M10x1x40-8.8 DIN 912 or with 2 screws 3/8-24 UNF ANSI B18.3-76; 37,5 mm long. Tightening torque: 2,5±0,5 daNm

**DIMENSIONS AND MOUNTING DATA - BKH5**



code	Ports - P, T, R, L Thread
<b>M</b>	M16x1,5 14 mm depth

Connection to the XY is done with 2 screws M8x40-8.8 DIN 912  
Tightening torque: 2,5±0,5 daNm

**ORDER CODE**

<b>B K H</b>	1	2	3	4	5
	-	-			

**Pos.1 - Versions\***

R	1	2	3	4	5	
•	•			•	•	-Input relief valve on line "P".
•	•	•		•		-Input check (non-return) valve on line "P".
•	•	•	•			-Shock valves on lines "R" and "L".
•	•	•	•			-Anti-cavitation valves on lines "R" and "L".

**Pos.2 - Relief Valve Pressure Settings, bar\*\***

<b>80</b>	<b>100</b>	<b>125</b>	<b>150</b>
-----------	------------	------------	------------

**Pos.3 - Ports**

- omit - BSPP (ISO 228)
- A** - SAE (ANSI B 1.1 - 1982)
- M** - Metric (ISO 262)

**Pos.4 - Option (Paint)\*\*\***

- omit - No Paint
- P** - Painted
- PC** - Corrosion Protected Paint

**Pos.5 - Design Series**

- omit - Factory specified

**NOTES:** \* Versions **R, 1, 2, 3, 4**-for HKU; **5** - for XY  
\*\* That does not concern version **2** and **3**.  
\*\*\* The colour is by customer's request.

The valve blocks are mangano-phosphatized as standard.