

HYDROSTATIC STEERING UNIT TYPE HKUQ.../4



HKUQ.../4 is a new series of hydrostatic steering units with an additionally increased flow. The hydrostatic steering unit type HKUQ.../4 is available for steering medium and large sized vehicles, allowing easy control either in servo-amplified mode or in emergency operation.

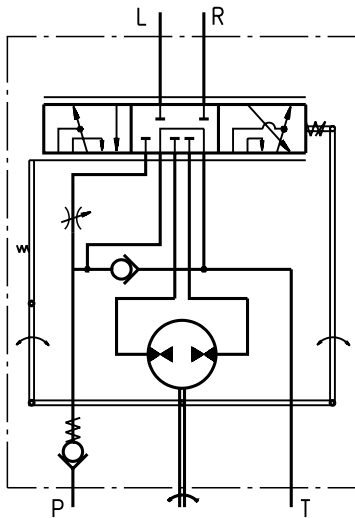
HKUQ.../4 is an "Open Center-Non Load Reaction" hydrostatic steering in which restrictor for amplifying factor from 1,3 to 2,5 is built-in.

In accordance with the size of the gear wheel set and amplifying factor, HKUQ...4 has the following working volume:

- from 80 cm³ to 200 cm³ for emergency operation mode (manual steering without servo-amplifying);

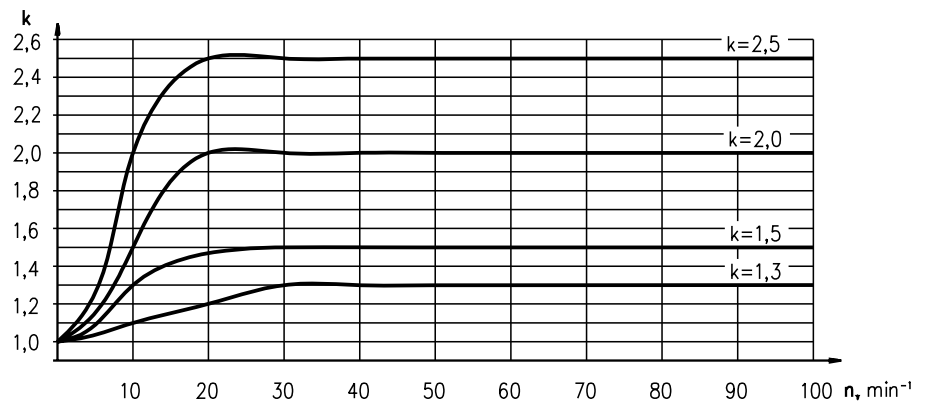
- from 100 cm³ to 500 cm³ for normal operation mode (with total flow amplifying).

There is no servo-amplifying of flow if low steering speed till 10 min⁻¹ is applied. In steering speed increase over 20 min⁻¹ there is total servo-amplifying of flow. In this mode gear wheel set flow and restrictor flow are added.



"Open Center - Non Load Reaction"
HKUQ.../4

VARIABLE AMPLIFYING FACTOR

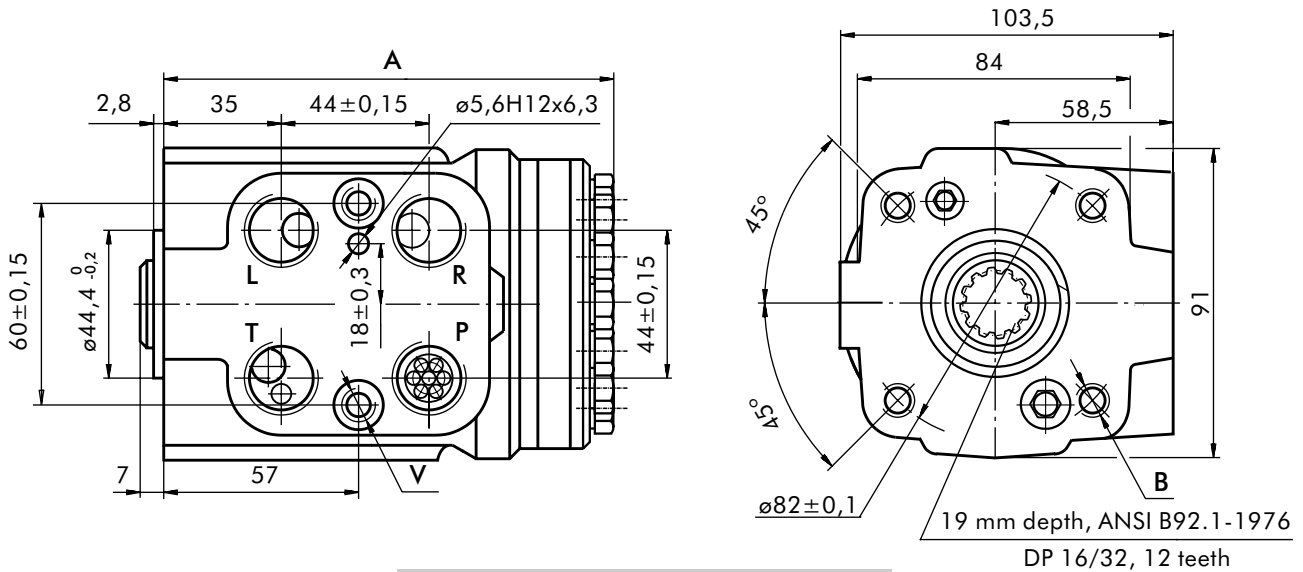


SPECIFICATION DATA

Parameters	Type																			
	HKUQ 80/.../4				HKUQ 100/.../4				HKUQ 125/.../4				HKUQ 160/.../4				HKUQ 200/.../4			
Displacement - without servo-amplifying (in emergency mode) - with servo-amplifying [cm ³ /rev]	79,2				99,0				123,8				158,4				198			
Rated Flow* [l/min]	10	12,5	16	20	12,5	16	20	25	16	20	25	32	20	25	32	40	25	32	40	50
Amplifying Factor (at shaft revolution over 20 min ⁻¹)	1,3	1,5	2,0	2,5	1,3	1,5	2,0	2,5	1,3	1,5	2,0	2,5	1,3	1,5	2,0	2,5	1,3	1,5	2,0	2,5
Rated Pressure [bar]	160																			
Max. Cont. Pressure in Line T - P _T [bar]	25																			
Max. Torque at Servoamplifying [Nm]	6 (by P _{T,max})																			
Max. Torque w/o Servoamplifying [Nm]	120																			
Weight, avg. [kg]	5,6				5,7				5,8				6,0				6,3			
Dimension A [mm]	136,2				138,8				142,2				146,8				152,2			

* Rated Flow at 100 RPM.

DIMENSIONS AND MOUNTING DATA



THREADED PORTS for HKUQ...

code	Ports - P*, T, R, L Thread	Column Mounting Thread - B	Valve Mounting Thread - V
-	G1/2 17 mm depth	4 x M10 18 mm depth	2 x M10x1 16 mm depth
A	3/4 - 16 UNF O-ring 17 mm depth	4x 3/8 - 16 UNC 15,7 mm depth	2 x 3/8 - 24 UNF 14,2 mm depth
M	M22x1,5 17 mm depth	4 x M10 18 mm depth	2 x M10x1 16 mm depth
MX	M20x1,5 17 mm depth	4 x M10 18 mm depth	2 x M10x1 16 mm depth

*Threaded Port **P** min 16 mm depth.

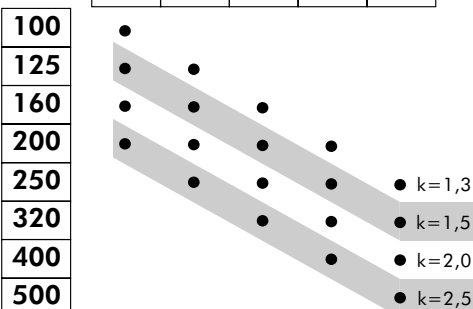
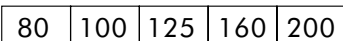
ORDER CODE for HKUQ...



Pos.1 - **Displacement code** (see Specification Data page 10)

- 80** - 79,2 [cm³/rev]
- 100** - 99,0 [cm³/rev]
- 125** - 123,8 [cm³/rev]
- 160** - 158,4 [cm³/rev]
- 200** - 198,0 [cm³/rev]

Pos.2 - **Displacement with amplifying factor 1,3; 1,5; 2,0 or 2,5**



Pos.3 - **Versions**

- 4** - Version 4 "Open Center - Non Load Reaction"

Pos.4 - **Ports**

- omit - BSPP (ISO 228)
- A** - SAE (ANSI B 1.1 - 1982)
- M** - Metric (ISO 262)
- MX** - Metric (ISO 262)

Pos.5 - **Option (Paint)****

- omit - No Paint
- P** - Painted
- PC** - Corrosion Protected Paint

Pos.6 - **Design Series**

- omit - Factory specified

NOTES:

- * Exemplary designation of steering unit with displacement 200 cm³ and amplifying factor 2,5 HKUQ 200/500/4
- ** Colour at customer's request.

The steering units are mangano-phosphatized as standard.